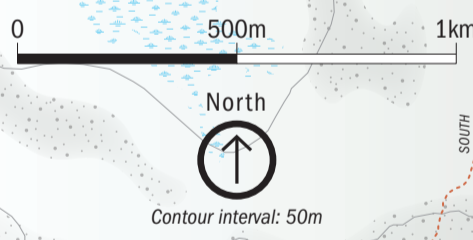
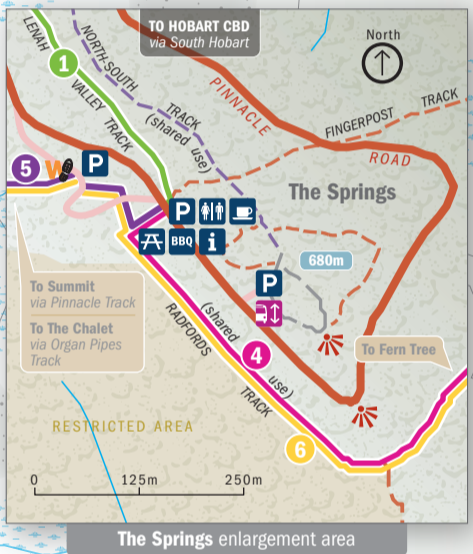
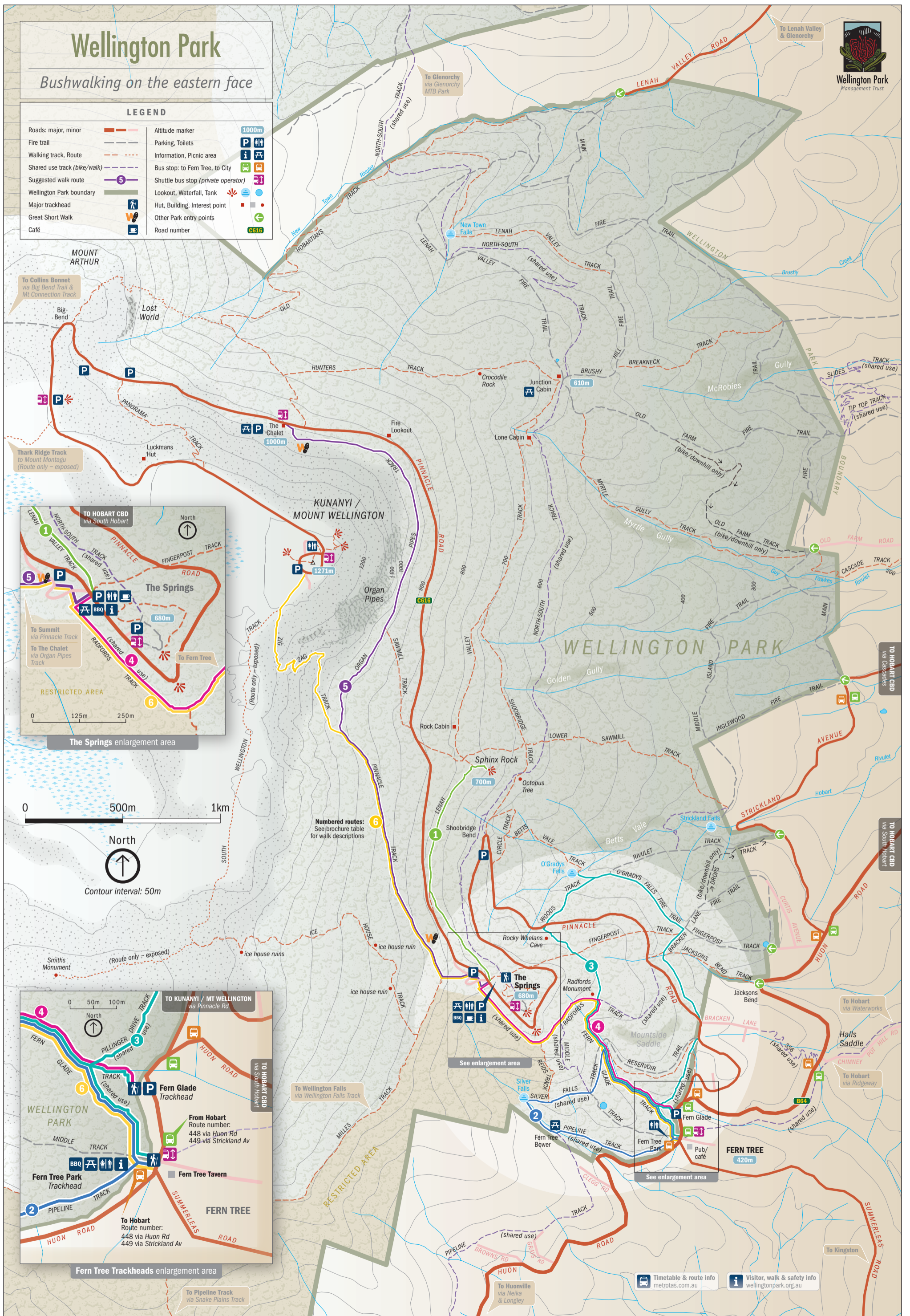


Wellington Park

Bushwalking on the eastern face

LEGEND

Roads: major, minor	Altitude marker	1000m
Fire trail	Parking, Toilets	P
Walking track, Route	Information, Picnic area	i
Shared use track (bike/walk)	Bus stop: to Fern Tree, to City	Bus icon
Suggested walk route	Shuttle bus stop (private operator)	Shuttle icon
Wellington Park boundary	Lookout, Waterfall, Tank	Lookout icon
Major trackhead	Hut, Building, Interest point	Hut icon
Great Short Walk	Other Park entry points	Green arrow icon
Café	Road number	6616



Timetable & route info: metrotas.com.au
Visitor, walk & safety info: wellingtonpark.org.au